

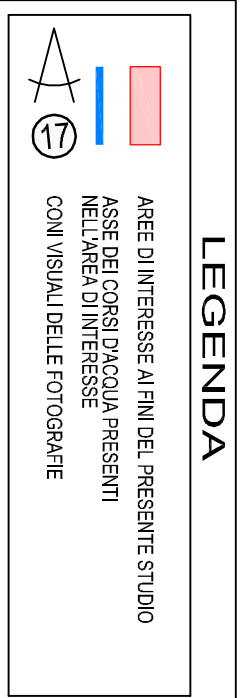


VALUTAZIONE DELL'ESPOSIZIONE DEI SUAP "LAMIFER"
AI FENOMENI ALLUVIONALI INDOTTI
DAL NAVIGLIO GRANDE BRESCIANO
STUDIO IDROLOGICO - IDRAULICO

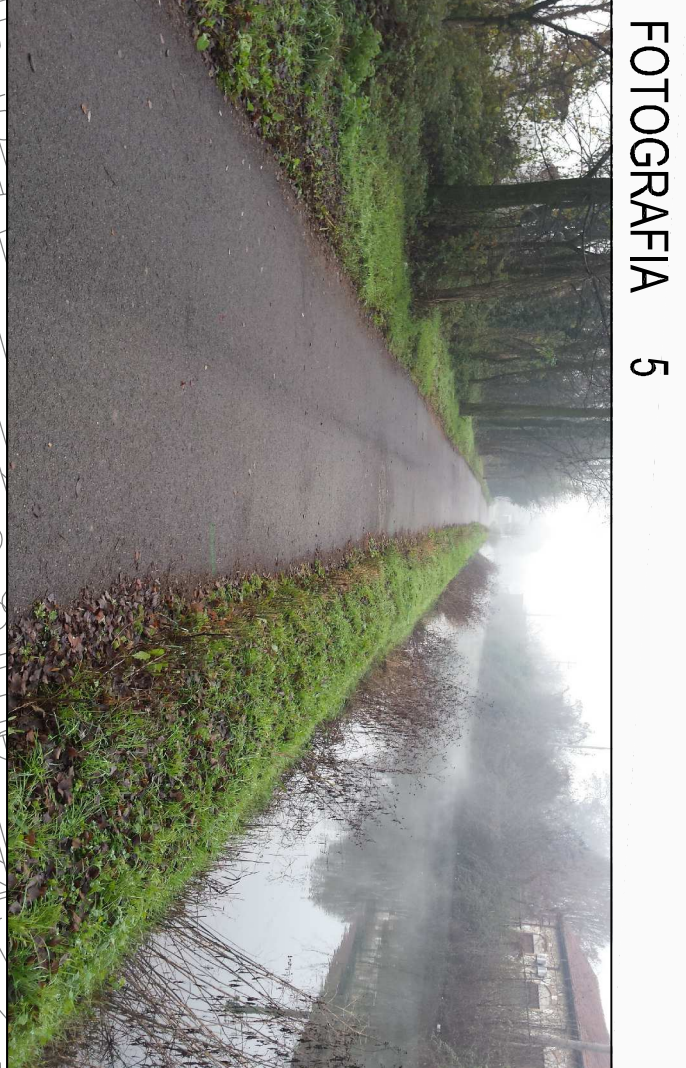
RETOLOGIO IDROGRAFICO NELL'AREA DI INTERESSE
FOTODOCUMENTAZIONE
1:1000
GEN. 17

IL COMITANTE
Ing. GIUSEPPE NERINELLI
Ing. ANTONIO DI PASQUALE

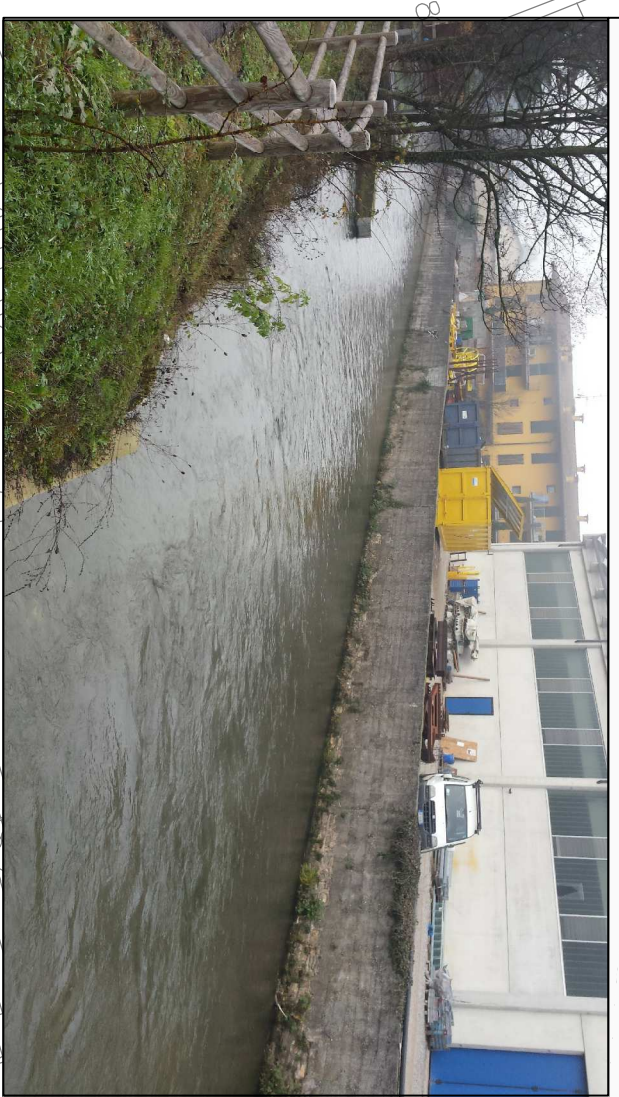
7



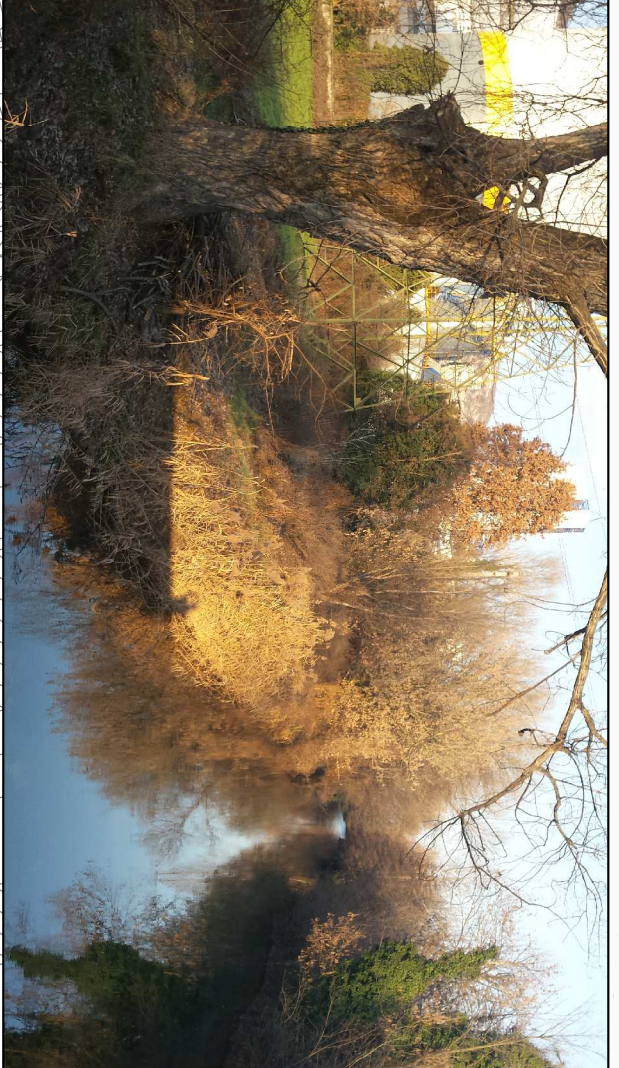
FOTOGRAFIA 5



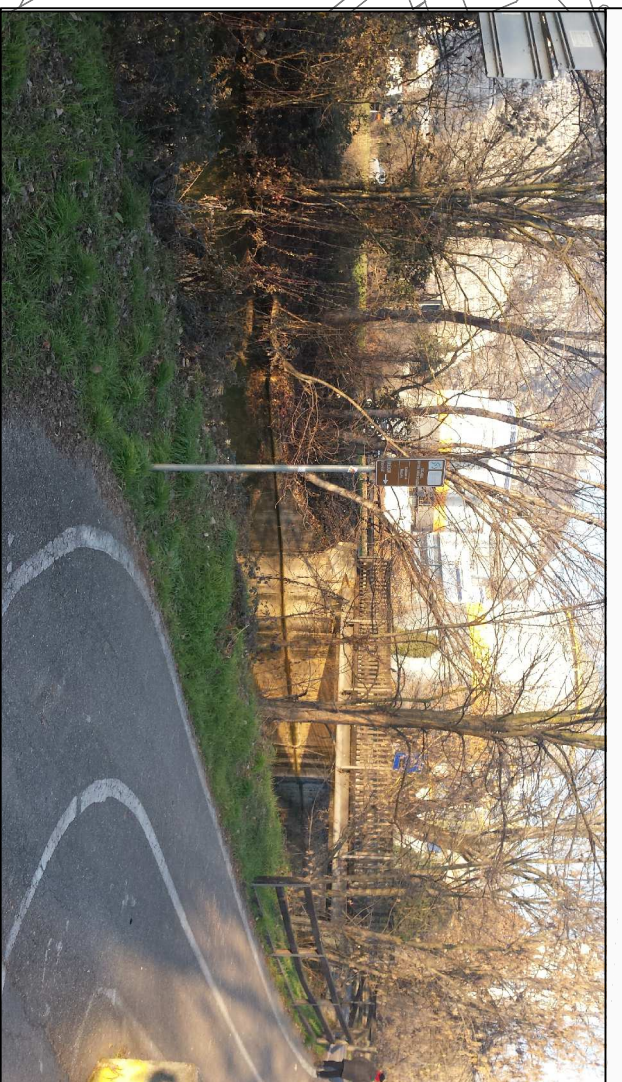
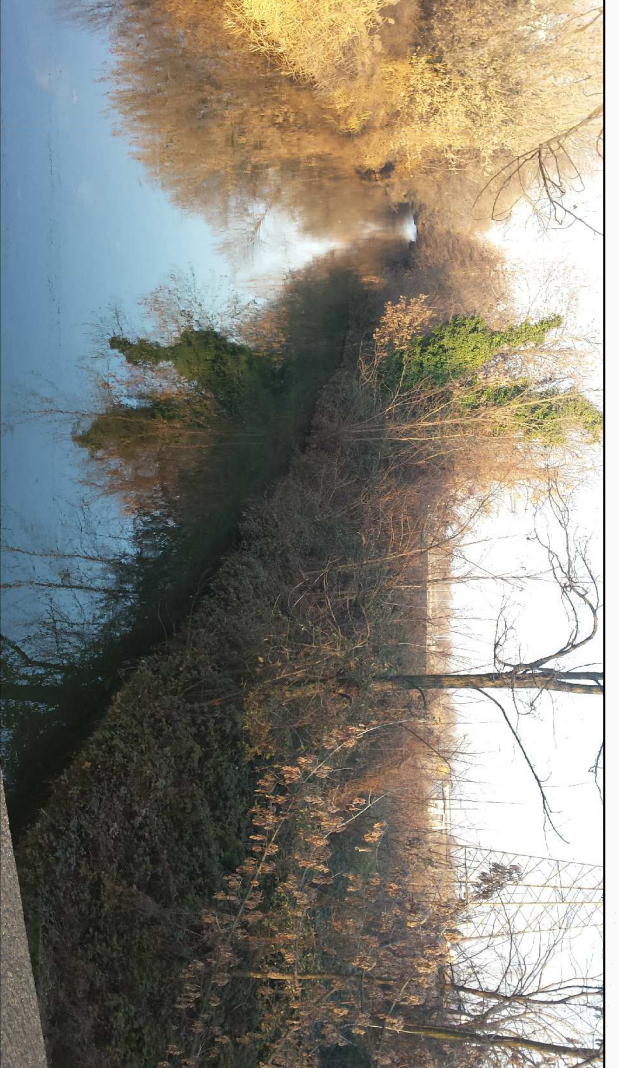
FOTOGRAFIA 6



FOTOGRAFIA 7



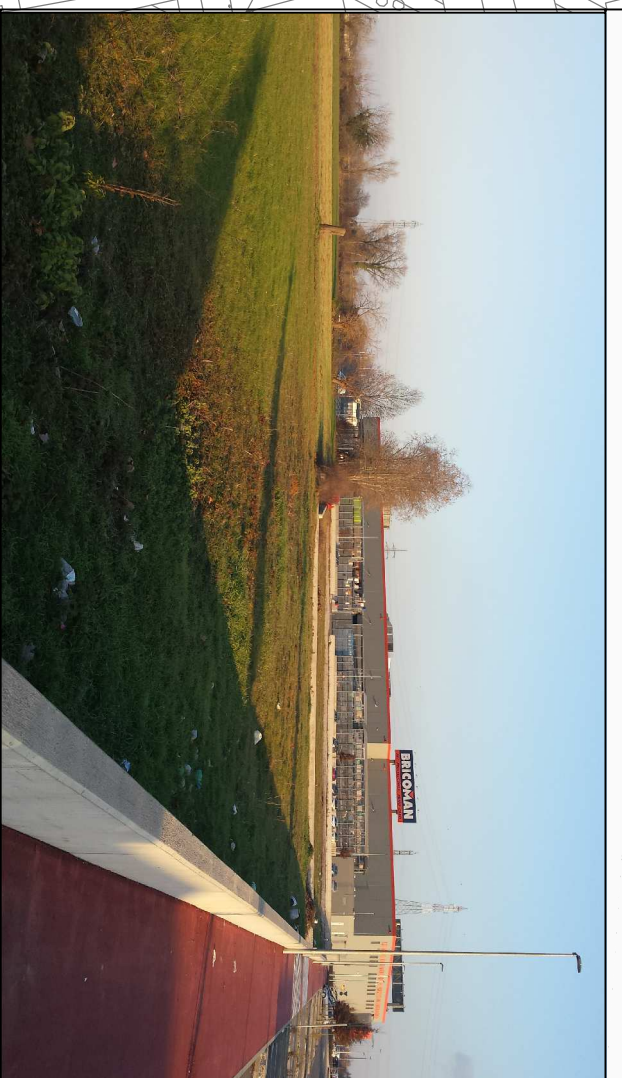
FOTOGRAFIA 8



FOTOGRAFIA 12



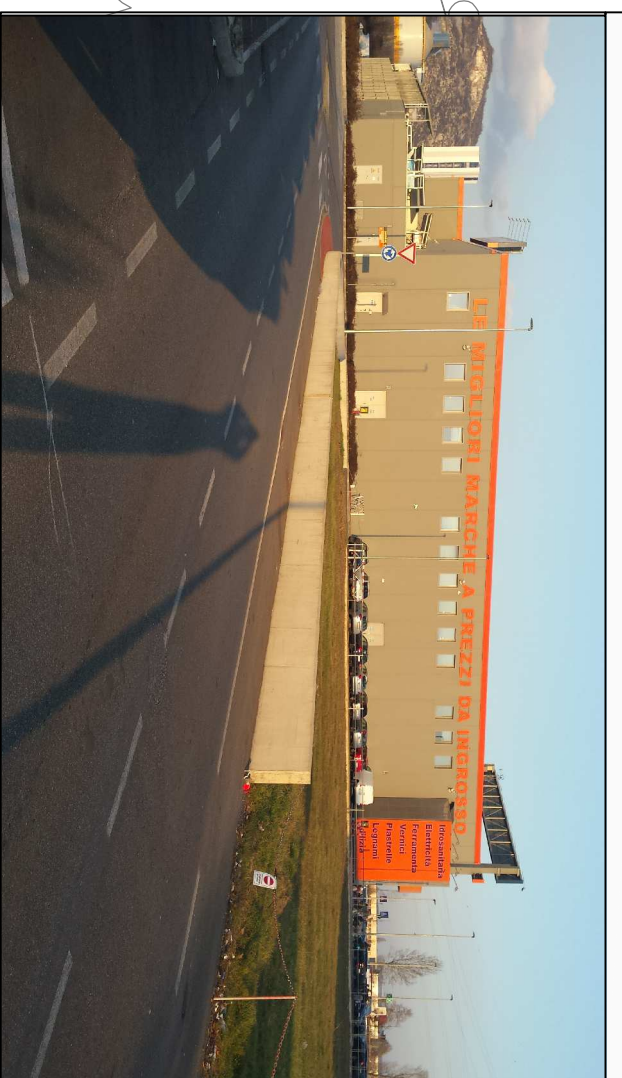
FOTOGRAFIA 15



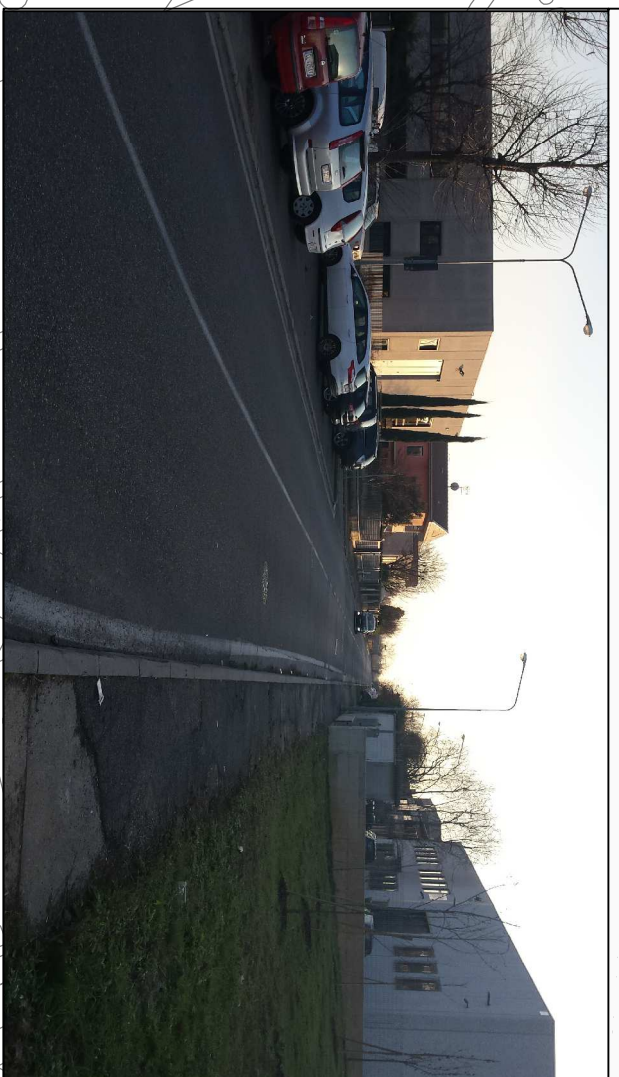
FOTOGRAFIA 18



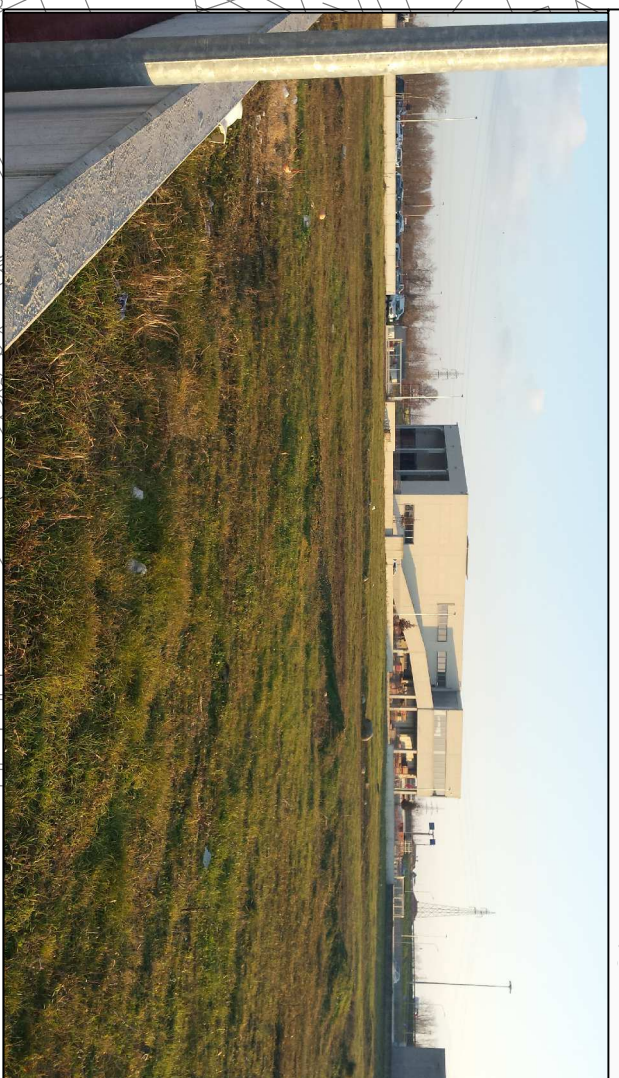
FOTOGRAFIA 22



FOTOGRAFIA 13



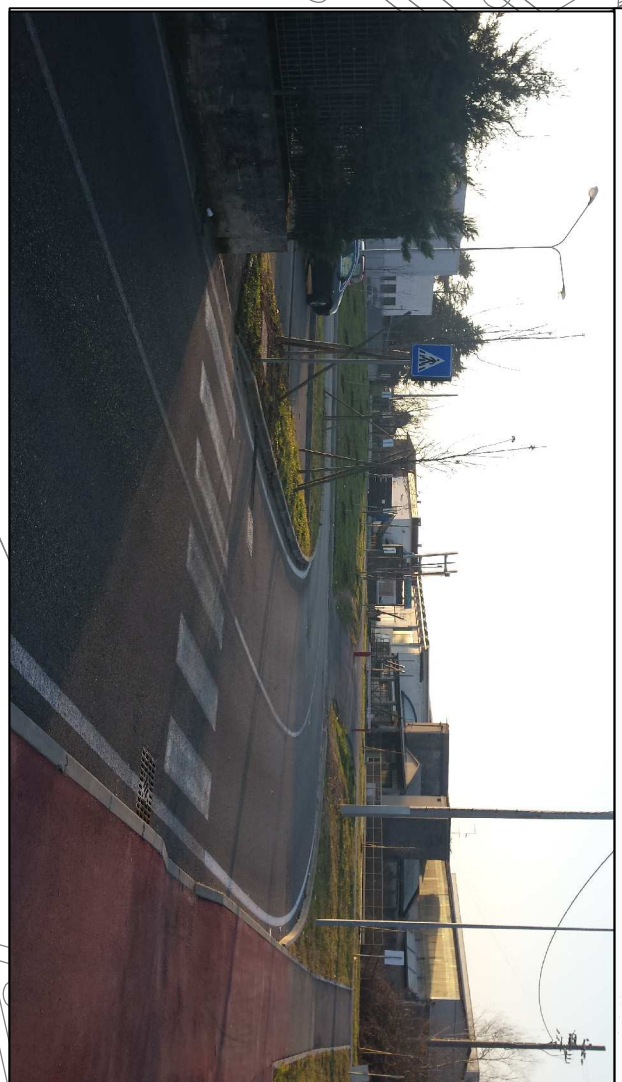
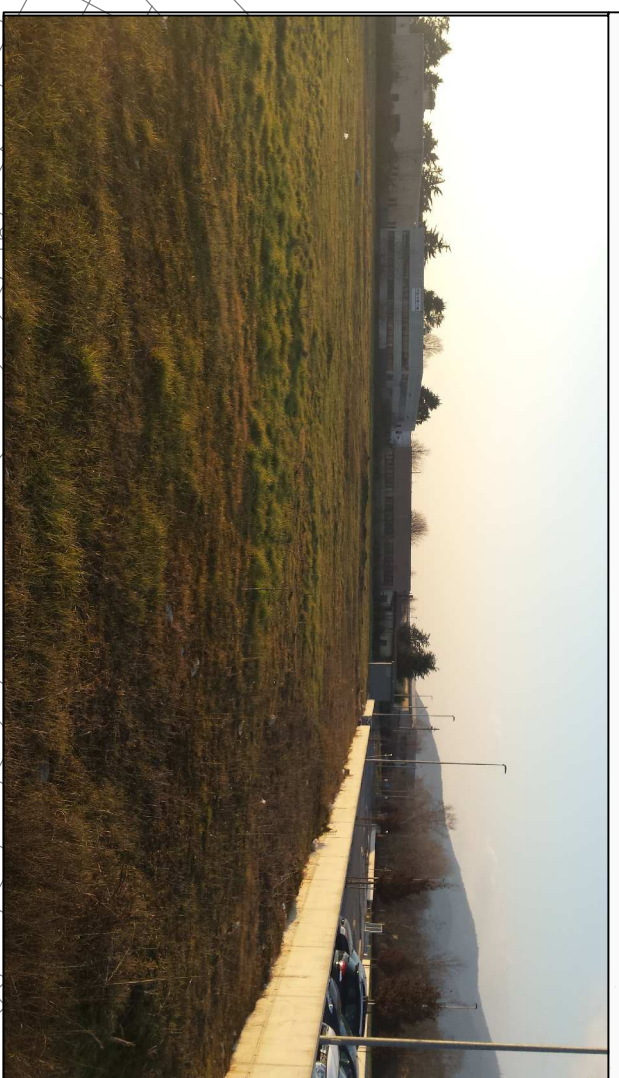
FOTOGRAFIA 16



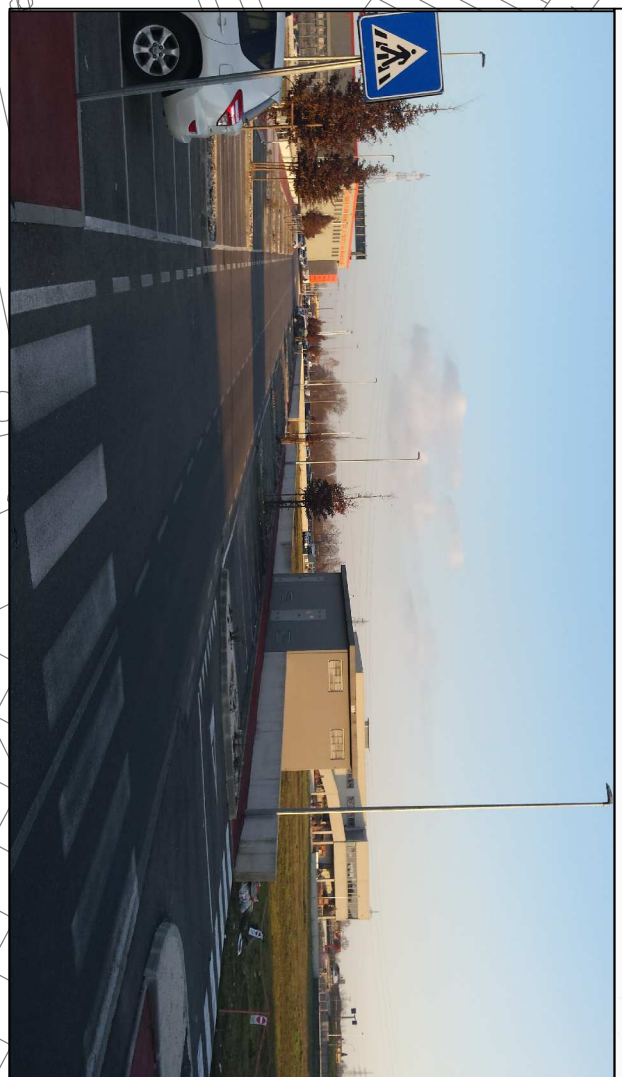
FOTOGRAFIA 19



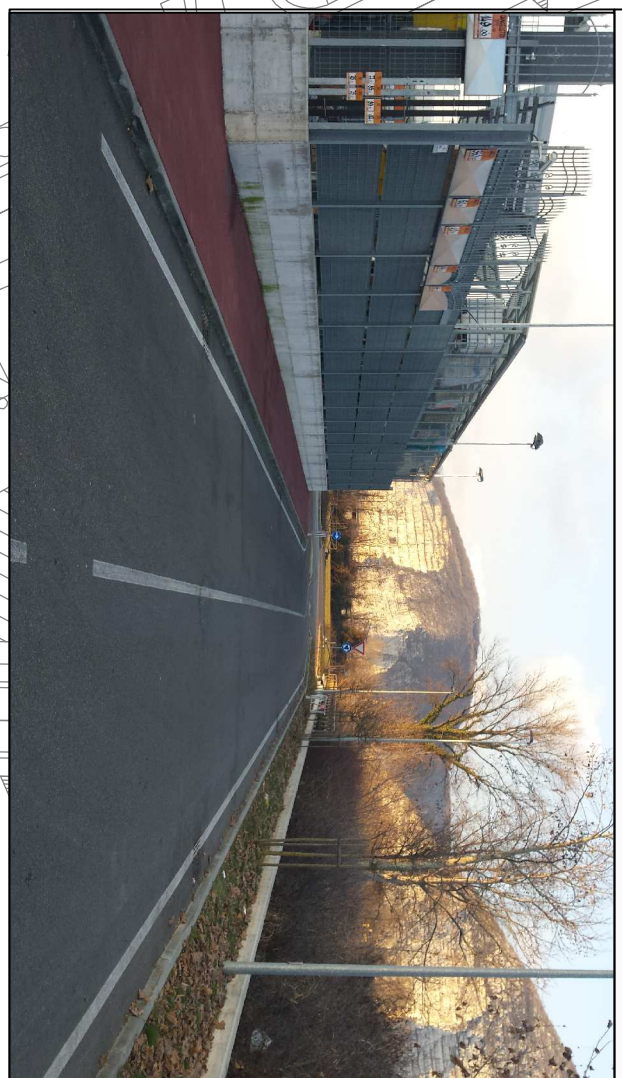
FOTOGRAFIA 23



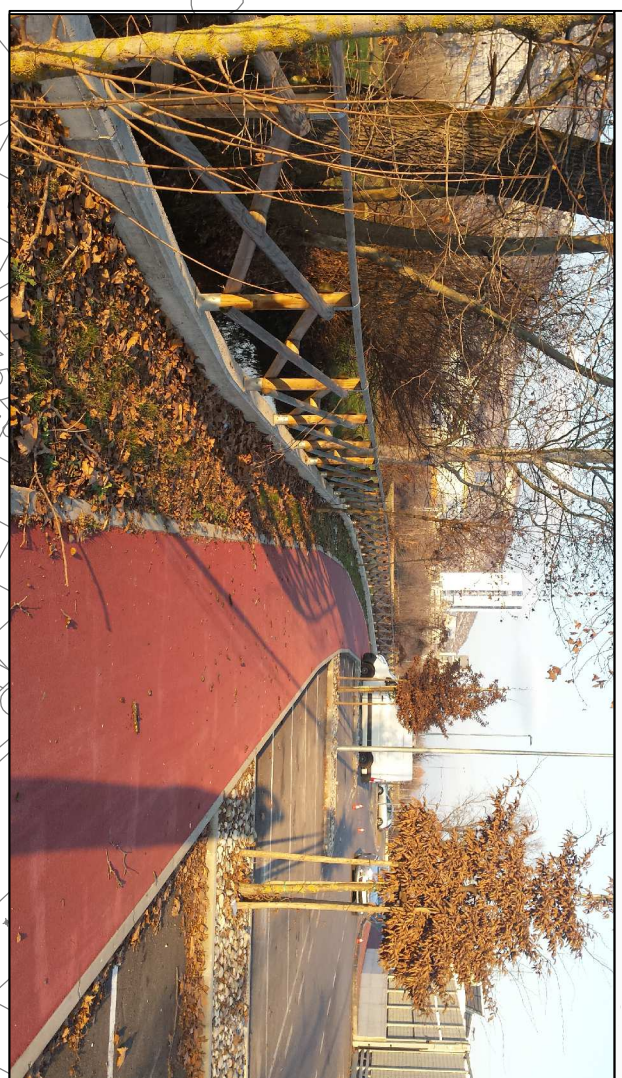
FOTOGRAFIA 14



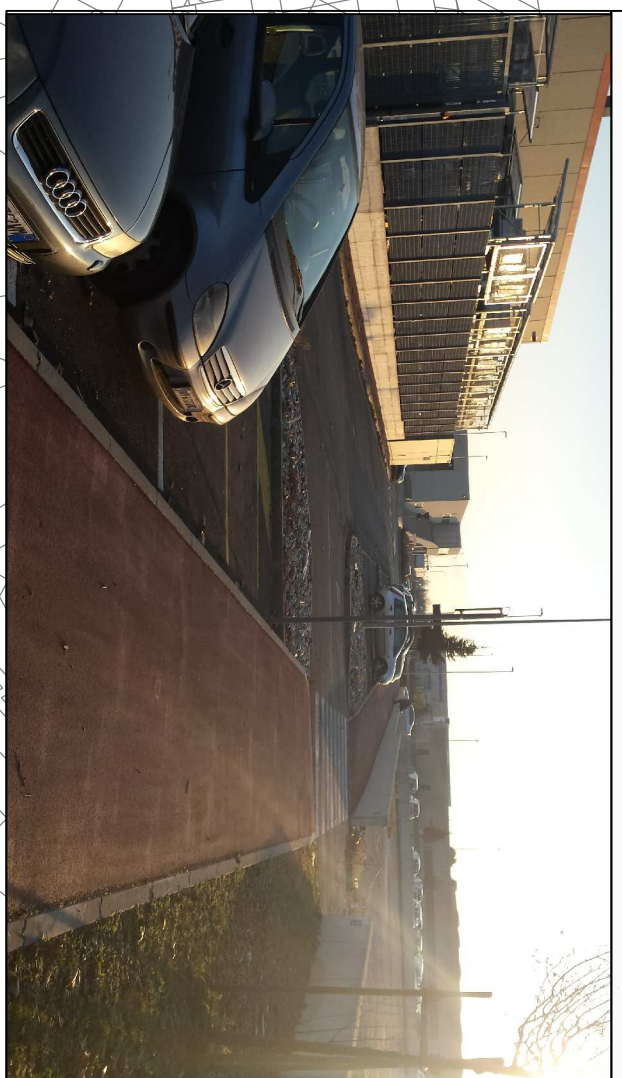
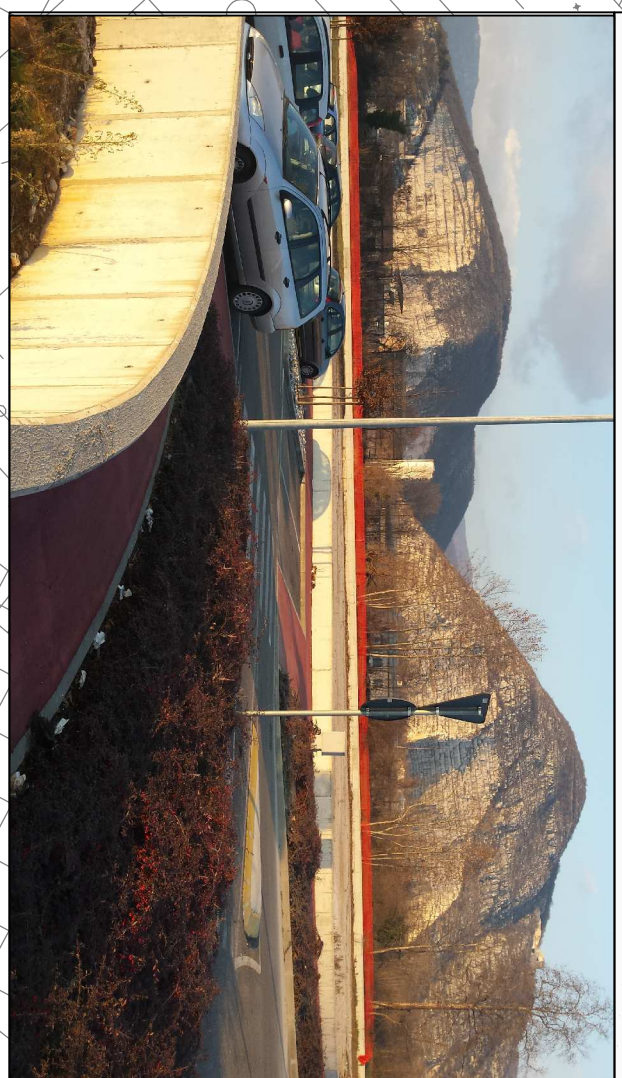
FOTOGRAFIA 17



FOTOGRAFIA 20



FOTOGRAFIA 24



FOTOGRAFIA 21

PONTE CARREBBE
MANUFATTO BRESCIANI 880

PONTE CARREBBE
MANUFATTO BRESCIANI 468

